



Oregon  
Blockchain



## GPU Mining

1/4/2022

**Analysts:**  
*Jerry Zou & Will Mahar*

# Presentation Outline

---

1. Overview of Computers
2. Computer Utility
3. Mining
4. Profitability
5. Risks
6. Recommendation



# Computer spec

**CPU:** Intel 11th Generation core i7

**GPU:** NVIDIA RTX 3060TI (LHR)

**RAM:** 16 GBs

**Storage:** 1TB HDD + 500 SSD

**Operating System:** Windows 11

**Monitor:** LG 27 inch



# Computer Utility (non mining) - Will

- Two desktops set up in office fully equipped (mouse, keyboard, monitor)
- When the computer isn't mining...
  - Functions of any other computer
  - High processing power for data analyses, coding, etc.
  - Easy to switch mining on/off



# What is GPU Mining?

---

- Using graphics processing unit (GPU) to verify electronic transaction on blockchain.
- Mining is the lifeblood of proof-of-work.
- GPU miners - computers running software - use their time and computation power to process transactions and produce blocks.



# What you can mine with GPU?



ethereum



RAVENCOIN



ethereum  
classic



BEAM

# Why GPU Mining?

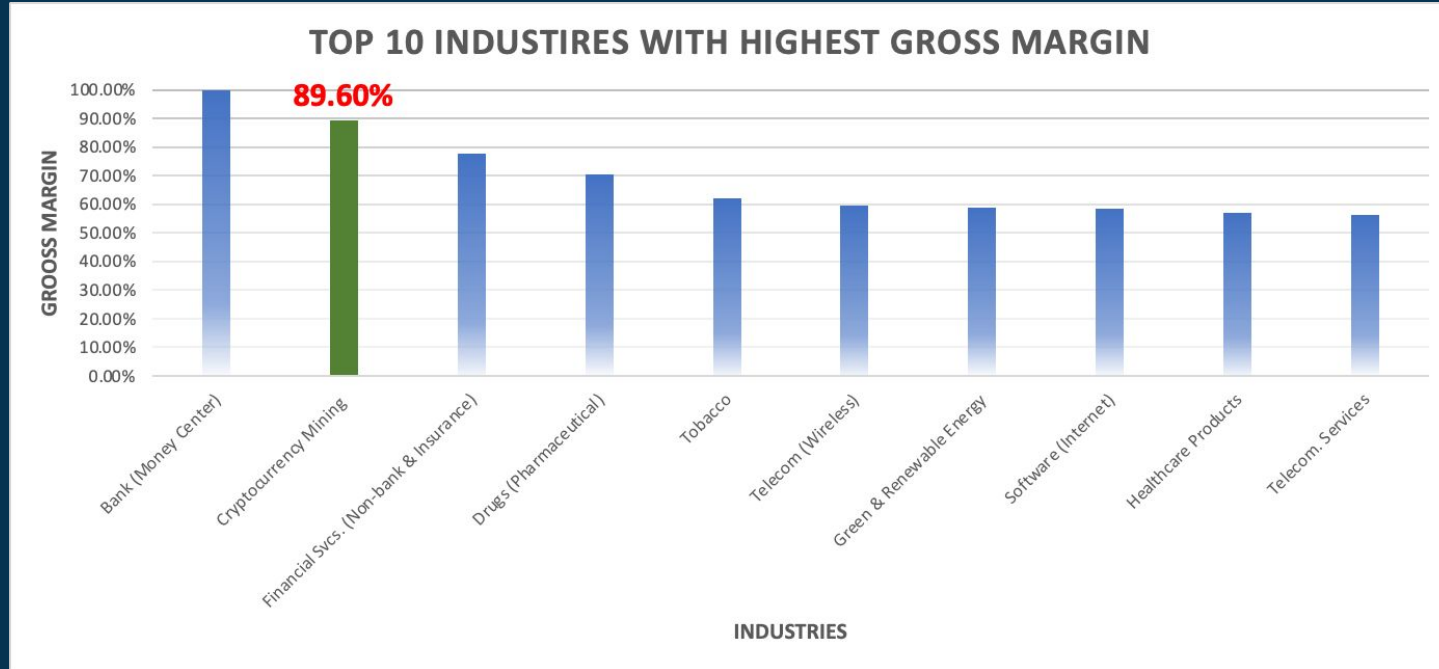
---

- Acquire cryptocurrency at a discount
- Acquire cryptocurrency anonymously
- Help blockchain stay decentralized and operating
- Acquire cryptocurrencies before they get listed on exchanges
- Have fun while making \$



# Gross Margin of Crypto Mining Industry

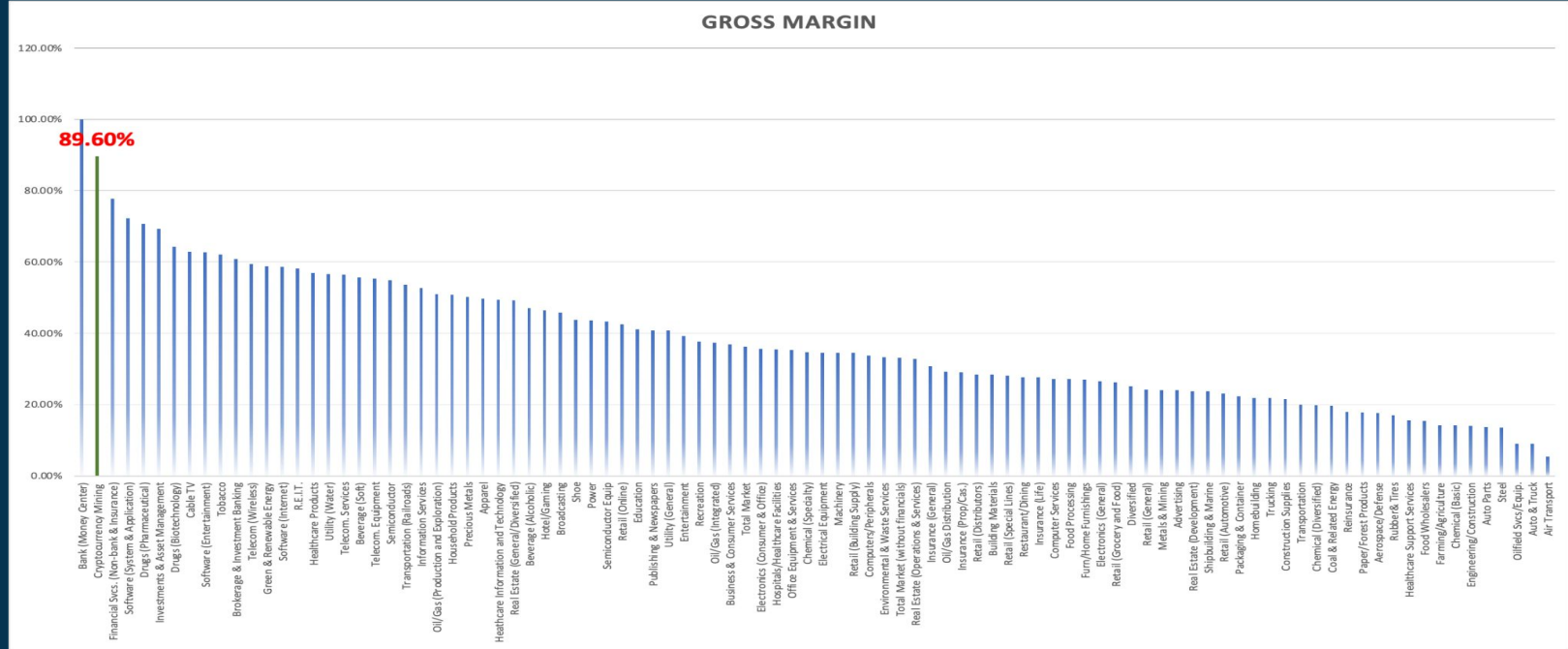
Sources:  
NYU Stern &  
D.A. Davidson





# Gross Margin of Crypto Mining Industry

Sources:  
NYU Stern &  
D.A. Davidson



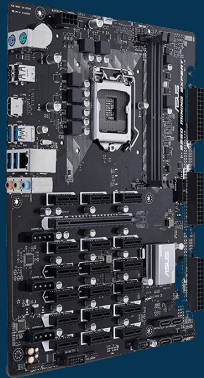
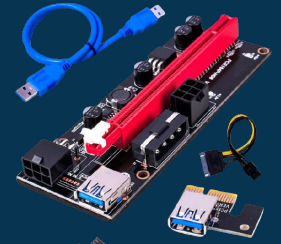
---

**Which industry has higher gross margin than Crypto Mining?**

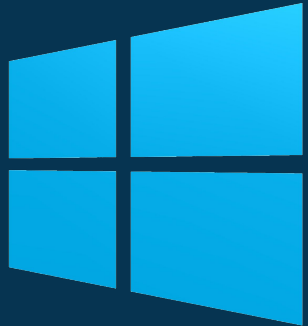




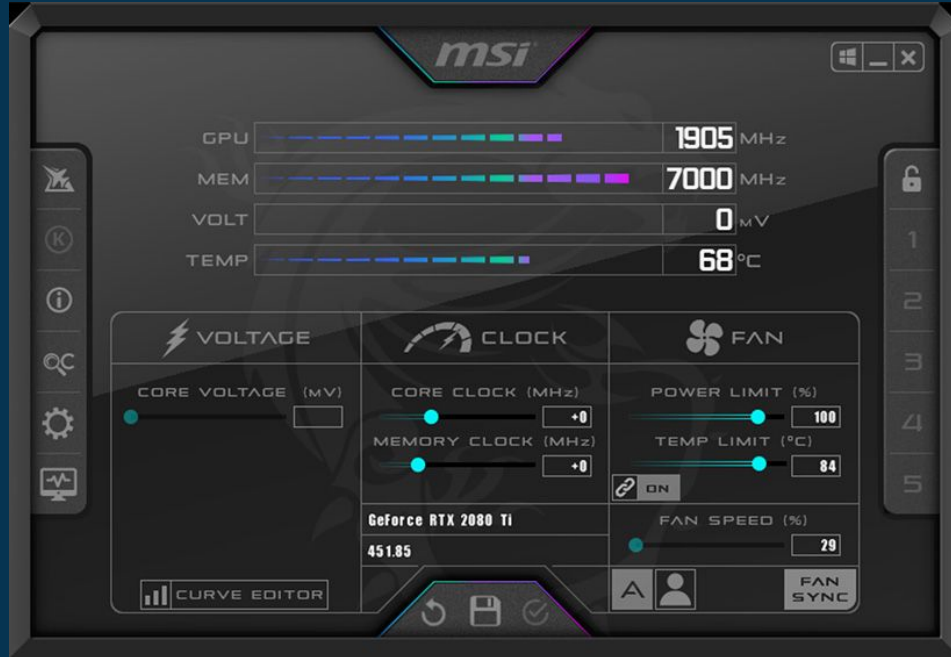
# Professional Mining Hardwares



# Professional Mining Softwares



# MSI Afterburner



# Solo Mining ETH

- Mining Alone
- No Pool Fees
- Requires Large Amount of Capital
- Low Payout Frequency

# Pool Mining ETH

- Mining with Others
- Pool Fees (1%-2%)
- Less Capital Intensive (small investor friendly)
- High Payout Frequency

Time	With entered hashrate you can find	ETH	BTC	USD
Hour	0 blocks	0	0.000000	0.00 \$
Day	0 blocks	0	0.000000	0.00 \$
Week	0 blocks	0	0.000000	0.00 \$
30 Days	0 blocks	0	0.000000	0.00 \$

Time	ETH	BTC	USD
Hour	0.00008	0.000006	0.29 \$
Day	0.00184	0.000145	6.84 \$
Week	0.01286	0.001017	47.91 \$
30 Days	0.05511	0.004358	205.34 \$



# Solo Mining FIRO

# Pool Mining FIRO

Firo (Zcoin) SOLO Mining Calculator

Time	With entered hashrate you can find	FIRO	BTC	USD
Hour	0 blocks	0	0.000000	0 \$
Day	0 blocks	0	0.000000	0 \$
Week	1 blocks	6.25	0.000692	32.53 \$
30 Days	5 blocks	31.25	0.003460	162.66 \$

Firo (Zcoin) POOL Mining Calculator

Time	FIRO	BTC	USD
Hour	0.04311	0.000005	0.22 \$
Day	1.03	0.000115	5.38 \$
Week	7.24	0.000802	37.69 \$
30 Days	31.04	0.003436	161.55 \$

# Energy Consumption

Source:  
energyuseca  
culator.com

Cost Per Hour: **0.0462**

Cost Per Day: **1.1088**

Cost Per Month: **33.73**

Cost Per Year: **404.76**

kWh Per Day: **10.08**

Hours Used Per Day:

Power Use (Watts):

Price (kWh):

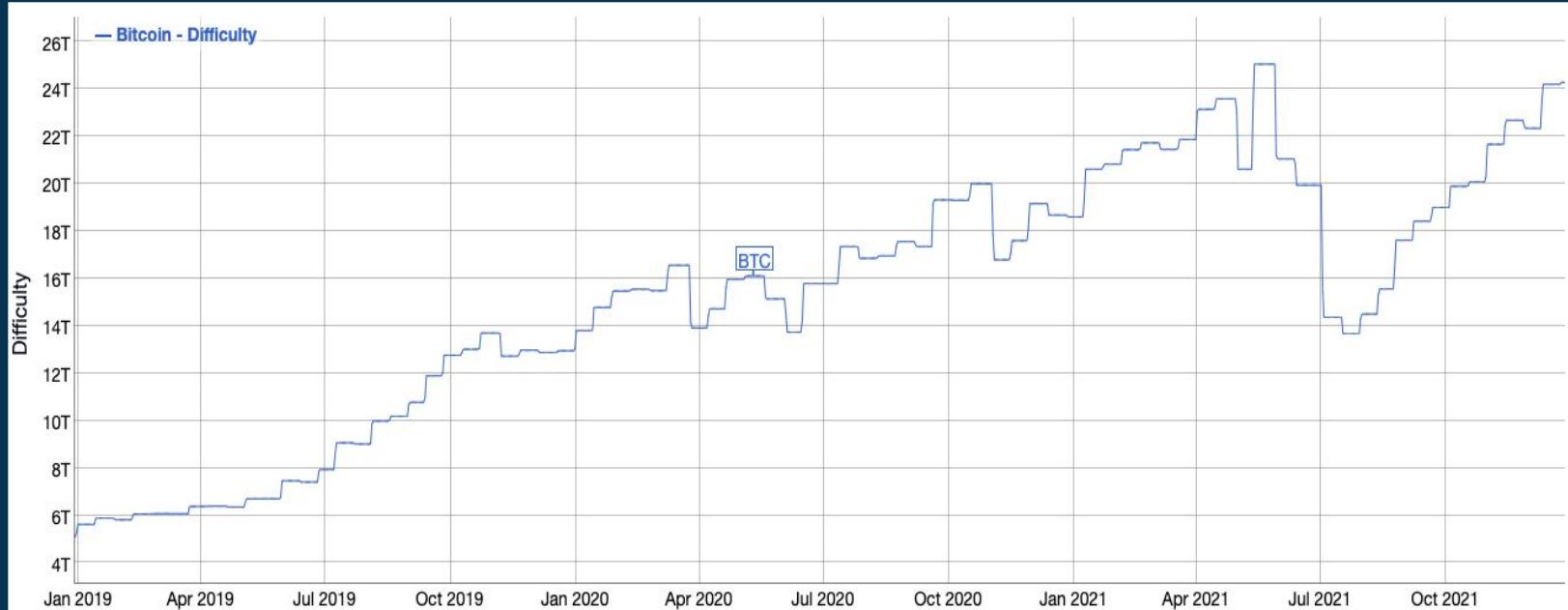
Calculate

Reset

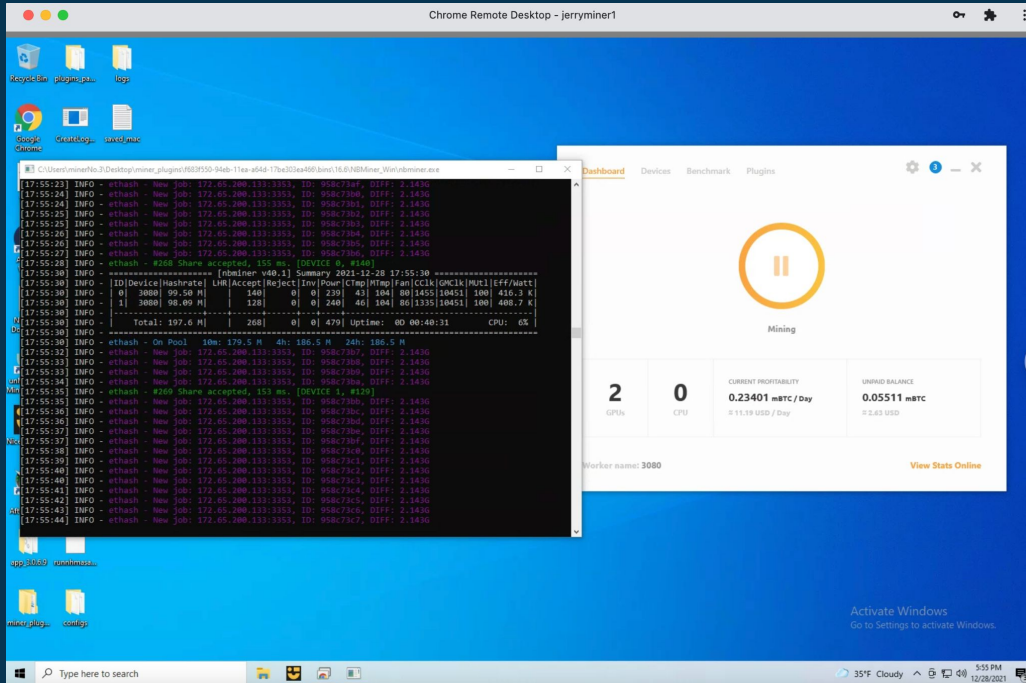
# ETH Mining Network Difficulty



# BTC Mining Network Difficulty



# How it looks like in Real Time?



<https://remotedesktop.google.com/access>

# How profitable is it?

It depends on a few factors...

- Price of the Cryptocurrencies
- Network Difficulties
- Electricity Cost
- GPU Cost
- Ethernet Cost
- etc.



# 3 Year Return

**Including Equipment Cost** ETH/Month

	Price of ETH				
	\$2,300.00	\$3,050.00	\$3,800.00	\$4,550.00	\$5,300.00
0.03645	-\$32.22	\$935.53	\$1,903.27	\$2,871.02	\$3,838.77
0.04050	\$667.99	\$1,864.07	\$3,060.15	\$4,256.22	\$5,452.30
0.04500	\$663.92	\$1,858.67	\$3,053.42	\$4,248.17	\$5,442.92
0.04950	\$1,030.31	\$2,344.54	\$3,658.76	\$4,972.99	\$6,287.21
0.05445	\$1,433.34	\$2,878.99	\$4,324.63	\$5,770.28	\$7,215.93

Price of ETH

ETH/Month

	\$2,300.00	\$3,050.00	\$3,800.00	\$4,550.00	\$5,300.00
0.03645	\$2,967.76	\$3,935.51	\$4,903.25	\$5,871.00	\$6,838.75
0.04050	\$3,297.51	\$4,372.79	\$5,448.06	\$6,523.34	\$7,598.61
0.04500	\$3,663.90	\$4,858.65	\$6,053.40	\$7,248.15	\$8,442.90
0.04950	\$4,030.29	\$5,344.52	\$6,658.74	\$7,972.97	\$9,287.19
0.05445	\$4,433.32	\$5,878.97	\$7,324.61	\$8,770.26	\$10,215.91

**Excluding Equipment Cost**

# Payback period

Payback Period (Months)

		\$2,300.00	\$3,050.00	\$3,800.00	\$4,550.00	\$5,300.00
ETH/Month	0.03645	37	28	23	19	17
	0.04050	33	25	21	17	15
	0.04500	30	23	19	16	14
	0.04950	27	21	17	14	13
	0.05445	25	19	16	13	11

## Assumptions

- Stop mining ETH in 8 months due to ETH 2.0 Release
- New coin is 40% as profitable as ETH



# Risks



Price Fluctuation of Cryptocurrencies



ETH 2.0



Hardware Failure



Government Regulations

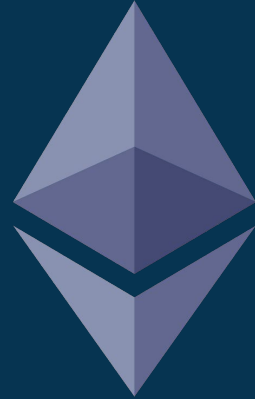
# Recommendation

The Ethereum logo, a stylized diamond shape with a vertical line through the center, is centered on the slide. It is surrounded by a glowing green circular aura and set against a background of blue and green circuitry patterns.

**Mine Ethereum with both computers until  
ETH 2.0; after ETH 2.0 we mine the next  
most profitable coin.**

---

# Questions?



# Useful Resources

---

Most Profitable Coin to Mine: <https://whattomine.com>

Mining Rig Management: <https://www.nicehash.com>; <https://hiveos.farm/>

Remote Desktop: <https://remotedesktop.google.com/access>

MSI Afterburner: <https://www.msi.com/Landing/afterburner/graphics-cards>

A Discord Group for Trading GPUs: <https://discord.gg/gpu>

MSI Afterburner Settings for GPUs:  
<https://miningchamber.com/library/gpu-mining/graphic-cards/>

Youtube Channel to learn more about mining:  
<https://www.youtube.com/c/RedPandaMining/videos>